



**Key:**

[Yellow]	Walking/Cycling Space
[Grey]	Footway
[Brown]	Carriageway/Path Resurfacing
[Light Green]	Raised Table
[Green]	Green Surfacing
[Red]	Red Surfacing
[Light Blue]	Planting
[Blue]	SuDS
[Orange]	Uncontrolled Crossing Tactile Paving
[Light Blue]	Crossing Tactile Paving
[Light Blue]	Parking Bay Modification
[Orange]	Sinoidal Road Hump
[Dashed Line]	Quietway Route Alignment
[Solid Line]	Proposed Kerb
[Dashed Line]	Proposed Dropped Kerb
[Dotted Line]	Existing Kerb
[Yellow Line]	Yellow Line Marking
[Green Circle]	Existing / Proposed Tree
[Black Triangle]	Sign & Post
[Black Square]	Lamp Column

Guy Street and Cherry Street junctions amended to be continuous footway.			
A Wharf Street junction amended to allow for vehicle U turns.			
Rev	Description	Drawn	Date
		MP	20/09/19

**sustrans**

JOIN THE MOVEMENT

The Walker Building, 58 Oxford Street, Birmingham, B5 5NR  
0121 633 5510 www.sustrans.org.uk

Project:  
**WARWICK - LEAMINGTON CYCLE CORRIDOR**

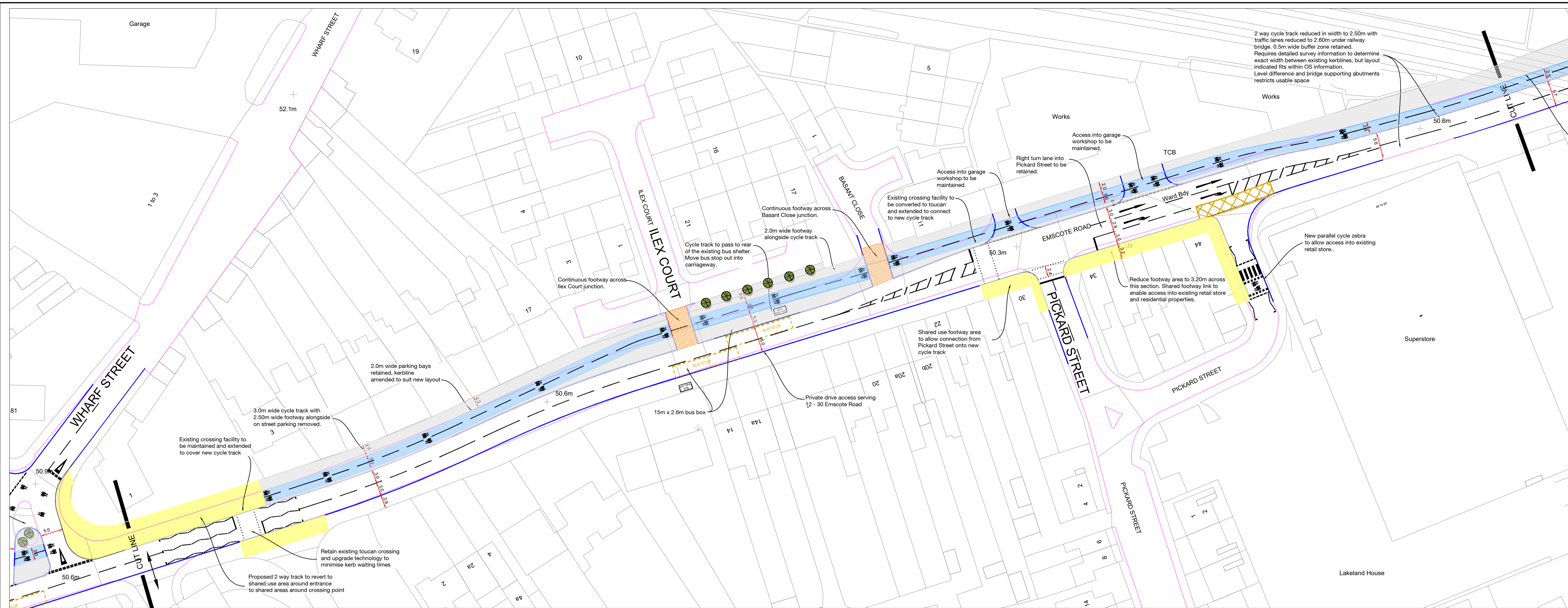
Title:  
**SEGREGATED CYCLE SUPER HIGHWAY**

**EMSCOTE ROAD (COVENTRY ROAD - WHARF STREET JUNCS)**

Drawn:	Checked:	Date:	Scale at A1:
MP		AUG 19	1:500

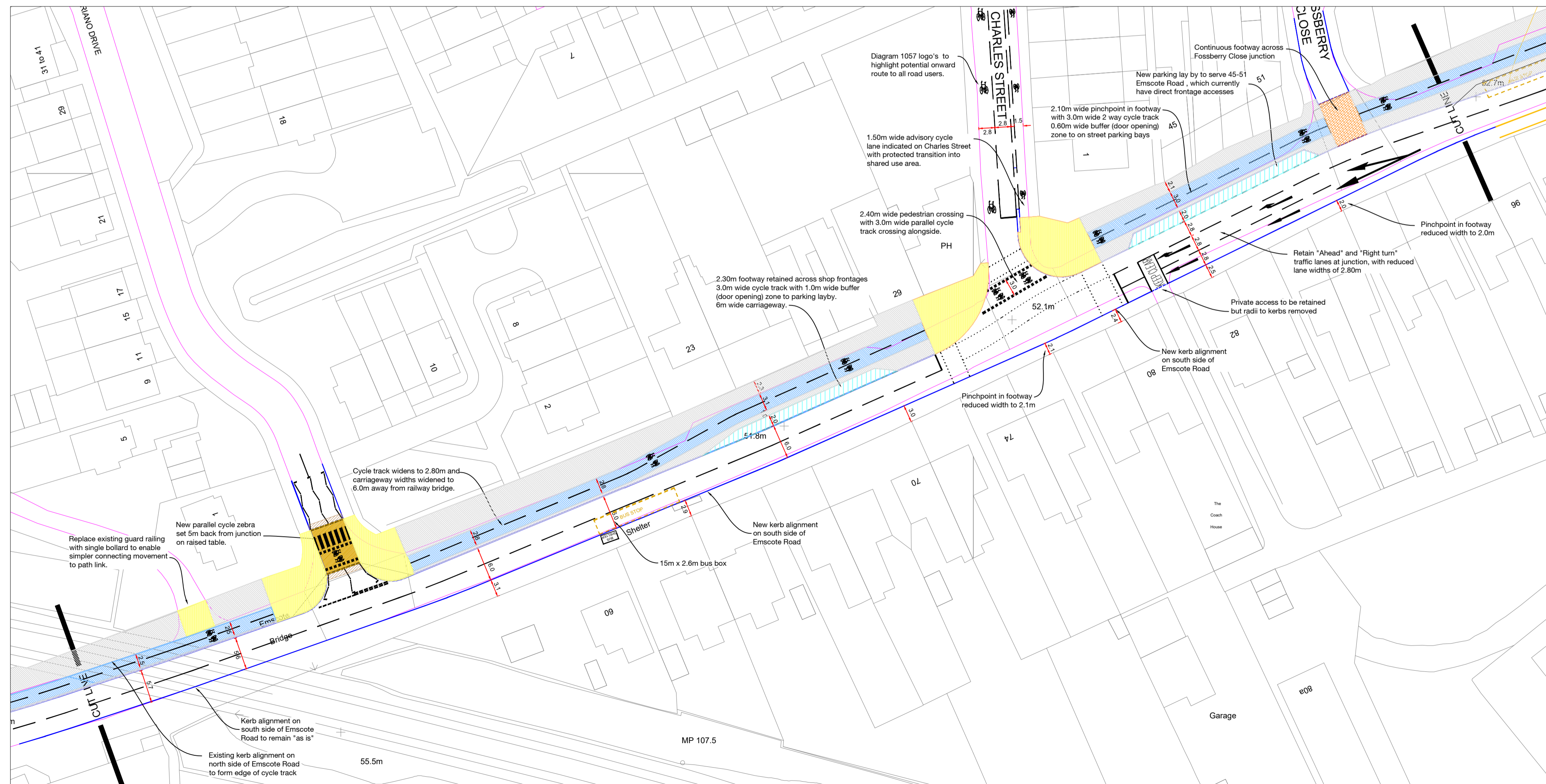
Status:  
**PRELIMINARY DESIGNS**

Drawing No:	Revision:
12445 / P / WM / 01	A



**Key:**

- Walking/Cycling Space
- Footway
- Carriageway/Path Resurfacing
- Raised Table
- Green Surfacing
- Red Surfacing
- Planting
- SuDS
- Uncontrolled Crossing Tactile Paving
- Crossing Tactile Paving
- Parking Bay Modification
- Sinusoidal Road Hump
- Quietway Route Alignment
- Proposed Kerb
- Proposed Dropped Kerb
- Existing Kerb
- Yellow Line Marking
- Existing / Proposed Tree
- Sign & Post
- Lamp Column



Bus stops moved into carriageway where practical. Cycle track at Illex Court realigned, Shared footway link and new parallel crossing on Pickard St.			
A	MP	20/09/19	
Rev	Description	Drawn	Date

**sustrans**

JOIN THE MOVEMENT

The Walker Building, 58 Oxford Street, Birmingham, B5 5NR  
0121 633 5510 www.sustrans.org.uk

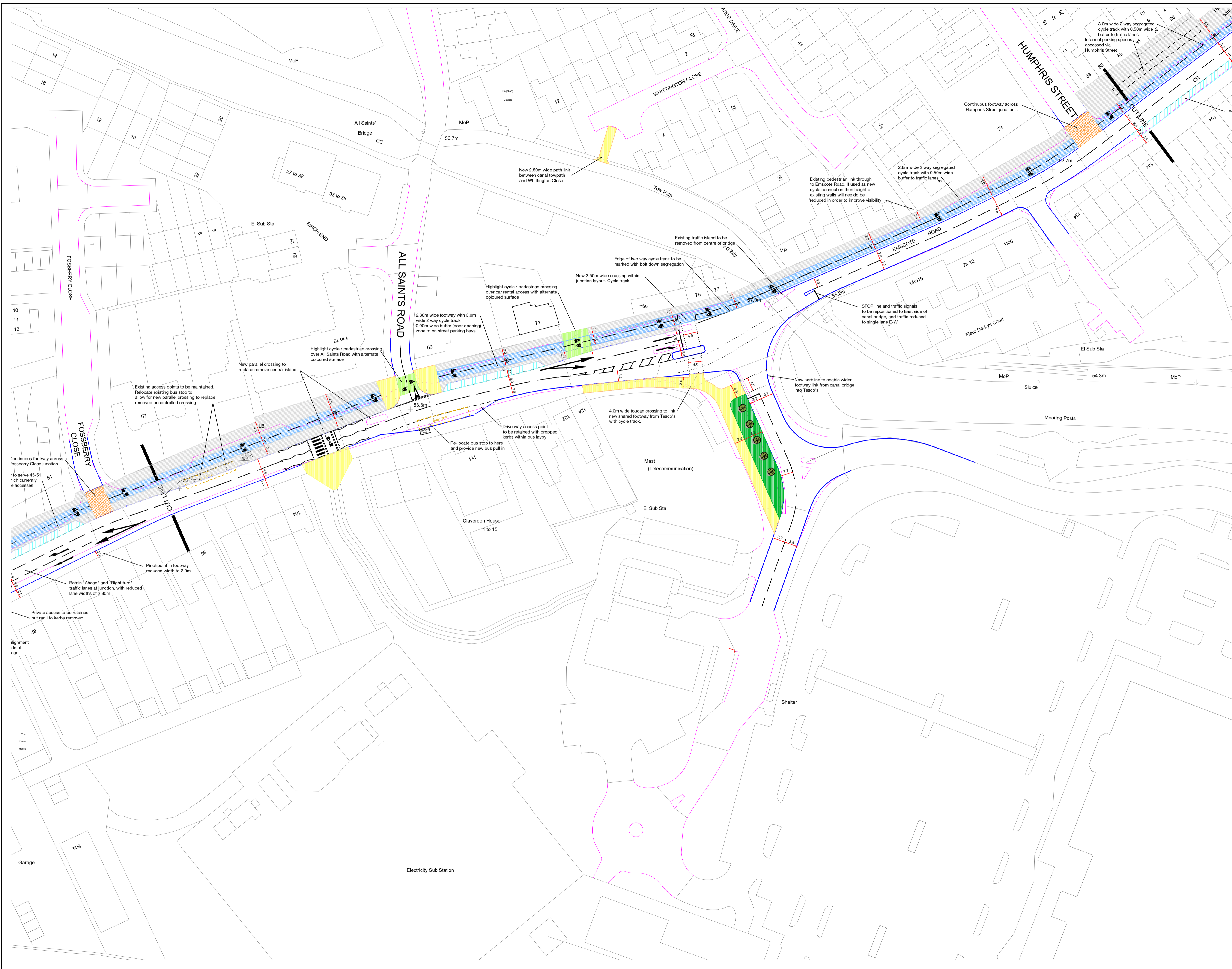
Project:  
**WARWICK - LEAMINGTON CYCLE CORRIDOR**

Title:  
**SEGREGATED CYCLE SUPER HIGHWAY  
EMSCOTE ROAD  
( WHARF STREET - FOSSBERRY CLOSE JUNCS)**

Drawn: Checked: Date: Scale at A1:  
MP AUG 19 1:500

Status:  
**PRELIMINARY DESIGNS**

Drawing No: Revision:  
12445 / P / WM / 02 A



**Key:**

- Walking/Cycling Space
- Footway
- Carriageway/Path Resurfacing
- Raised Table
- Green Surfacing
- Red Surfacing
- Planting
- SuDS
- Uncontrolled Crossing Tactile Paving
- Crossing Tactile Paving
- Parking Bay Modification
- Sinusoidal Road Hump
- Quietway Route Alignment
- Proposed Kerb
- Proposed Dropped Kerb
- Existing Kerb
- Yellow Line Marking
- Existing / Proposed Tree
- Sign & Post
- Lamp Column

B	Tesco link amended	MP	01/08/20
A	Canal link to Whittington Close added, notes added.	MP	20/09/19
Rev	Description	Drawn	Date

**sustrans**

JOIN THE MOVEMENT

The Walker Building, 58 Oxford Street, Birmingham, B5 5NR  
0121 633 5510 www.sustrans.org.uk

Project:  
**WARWICK - LEAMINGTON CYCLE CORRIDOR**

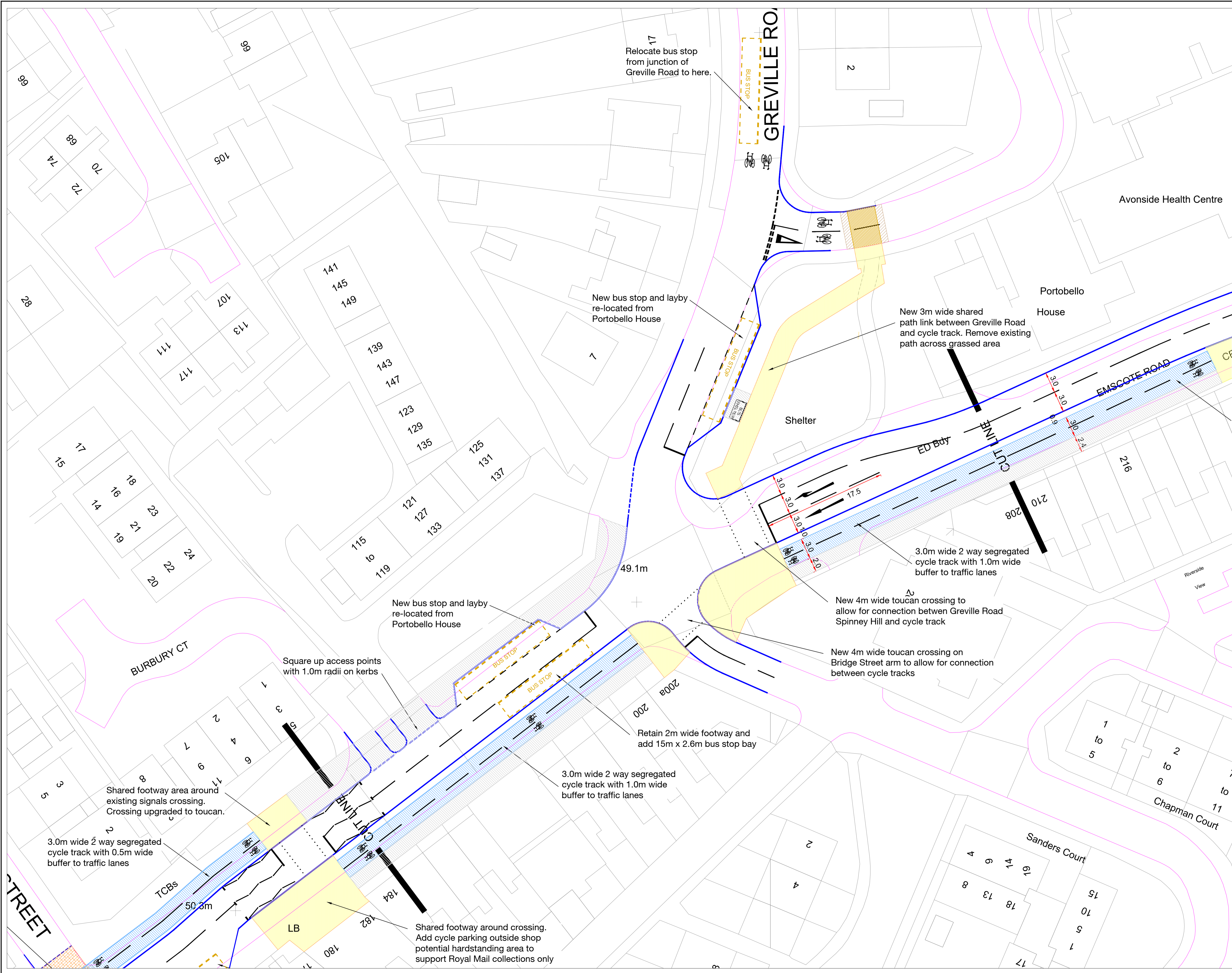
Title:  
**SEGREGATED CYCLE SUPER HIGHWAY**

**EMSCOTE ROAD (FOSSBERRY CLOSE to HUMPHRIS STREET JUNCS)**

Drawn: Checked: Date: Scale at A1:  
MP SEPT 19 1:500

Status:  
**PRELIMINARY DESIGNS**

Drawing No: Revision:  
12445 / P / WM / 03 **B**



**Key:**

- Walking/Cycling Space
- Footway
- Carriageway/Path Resurfacing
- Raised Table
- Green Surfacing
- Red Surfacing
- Planting
- SuDS
- Uncontrolled Crossing Tactile Paving
- Crossing Tactile Paving
- Parking Bay Modification
- Sinusoidal Road Hump
- Quietway Route Alignment
- Proposed Kerb
- Proposed Dropped Kerb
- Existing Kerb
- Yellow Line Marking
- Existing / Proposed Tree
- Sign & Post
- Lamp Column

Rev	Description	Drawn	Date
A	Bus stop on Greville Road relocated.	MP	20/09/19



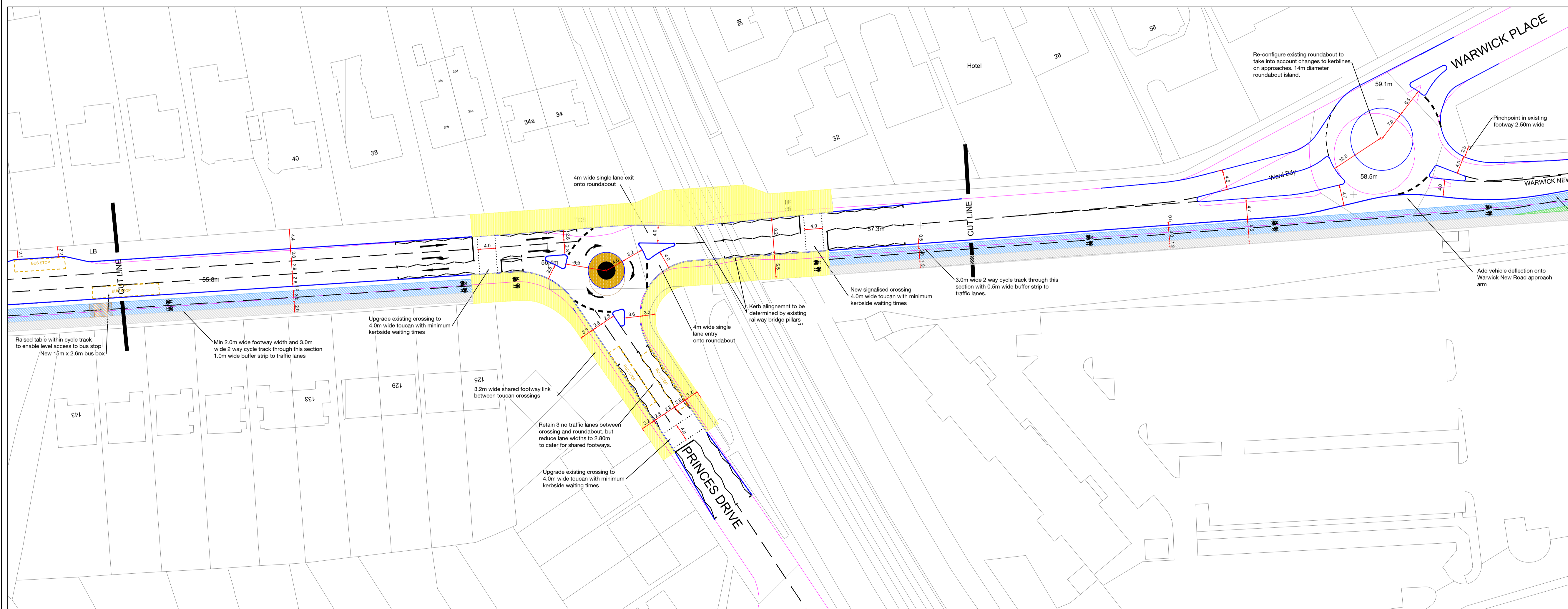
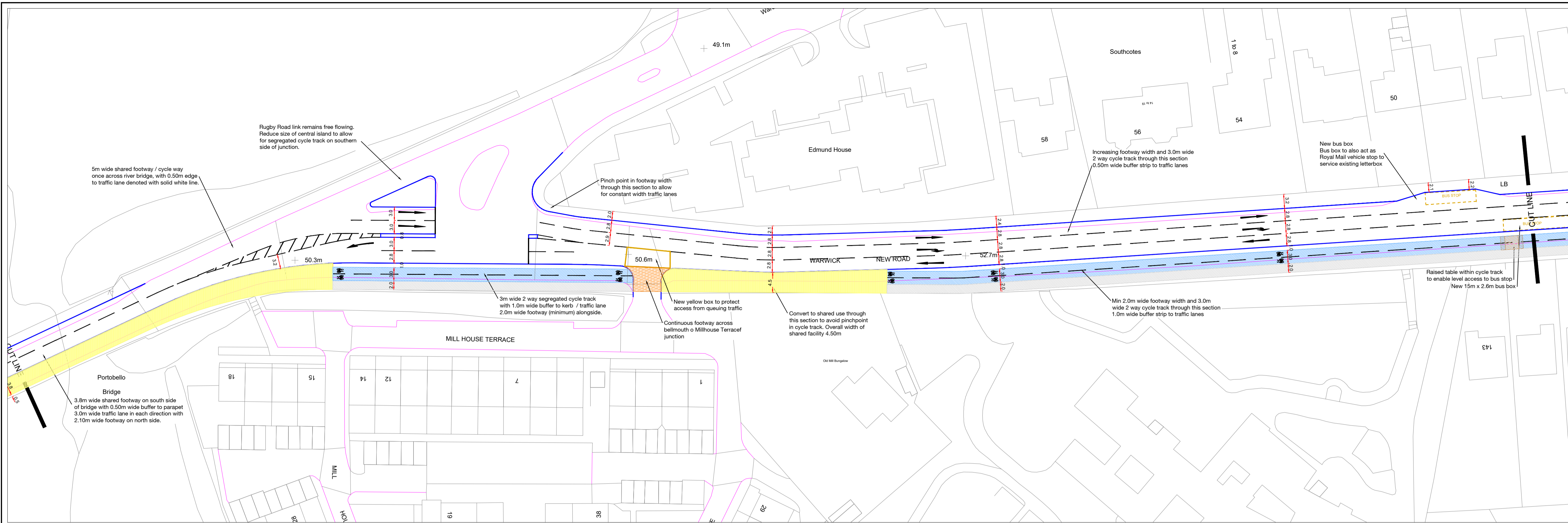
Project:  
WARWICK - LEAMINGTON CYCLE CORRIDOR

Title:  
SEGREGATED CYCLE SUPER HIGHWAY  
EMSCOTE ROAD / GREVILLE ROAD JUNCTION  
TRAFFIC SIGNALS OPTION

Drawn: Checked: Date: Scale at A1:  
MP SEPT 19 1:250

Status:  
PRELIMINARY DESIGNS

Drawing No: Revision:  
12445 / P / WM / 07 A



**Key:**

[Yellow]	Walking/Cycling Space
[Grey]	Footway
[Dark Grey]	Carriageway/Path Resurfacing
[Light Grey]	Raised Table
[Green]	Green Surfacing
[Red]	Red Surfacing
[Orange]	Planting
[Blue]	SuDS
[Brown]	Uncontrolled Crossing Tactile Paving
[Light Blue]	Crossing Tactile Paving
[Light Green]	Parking Bay Modification
[Dark Blue]	Sinusoidal Road Hump
[Pink]	Quietway Route Alignment
[Dashed Blue]	Proposed Kerb
[Dashed Red]	Proposed Dropped Kerb
[Dashed Yellow]	Existing Kerb
[Yellow Line]	Yellow Line Marking
[Green Circle]	Existing / Proposed Tree
[Black Triangle]	Sign & Post
[Black Square]	Lamp Column

Rev	Description	Drawn	Date
A	Continuous footway added to Millhouse Drive access	MP	26/09/19

**sustrans**

JOIN THE MOVEMENT

The Walker Building, 58 Oxford Street, Birmingham, B5 5NR  
0121 633 5510 www.sustrans.org.uk

Project:  
**WARWICK - LEAMINGTON CYCLE CORRIDOR**

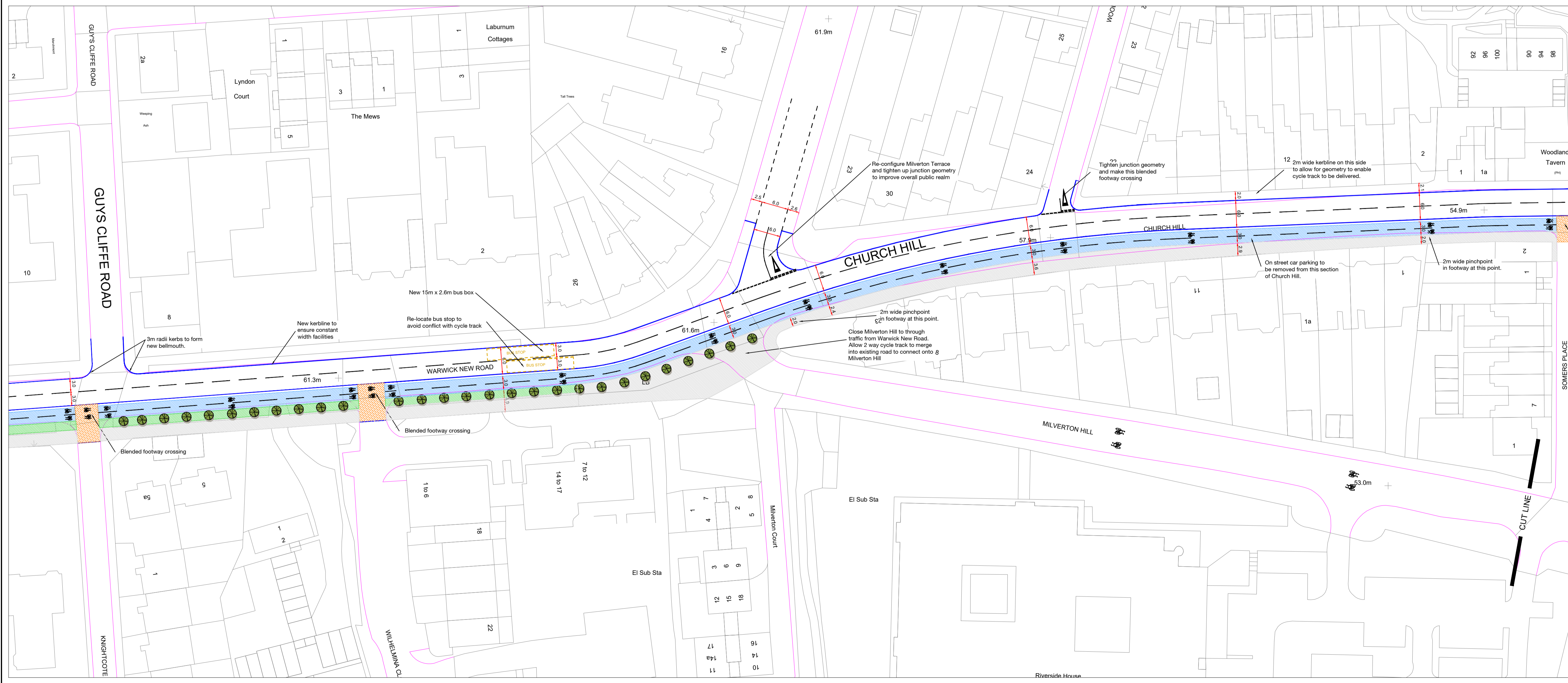
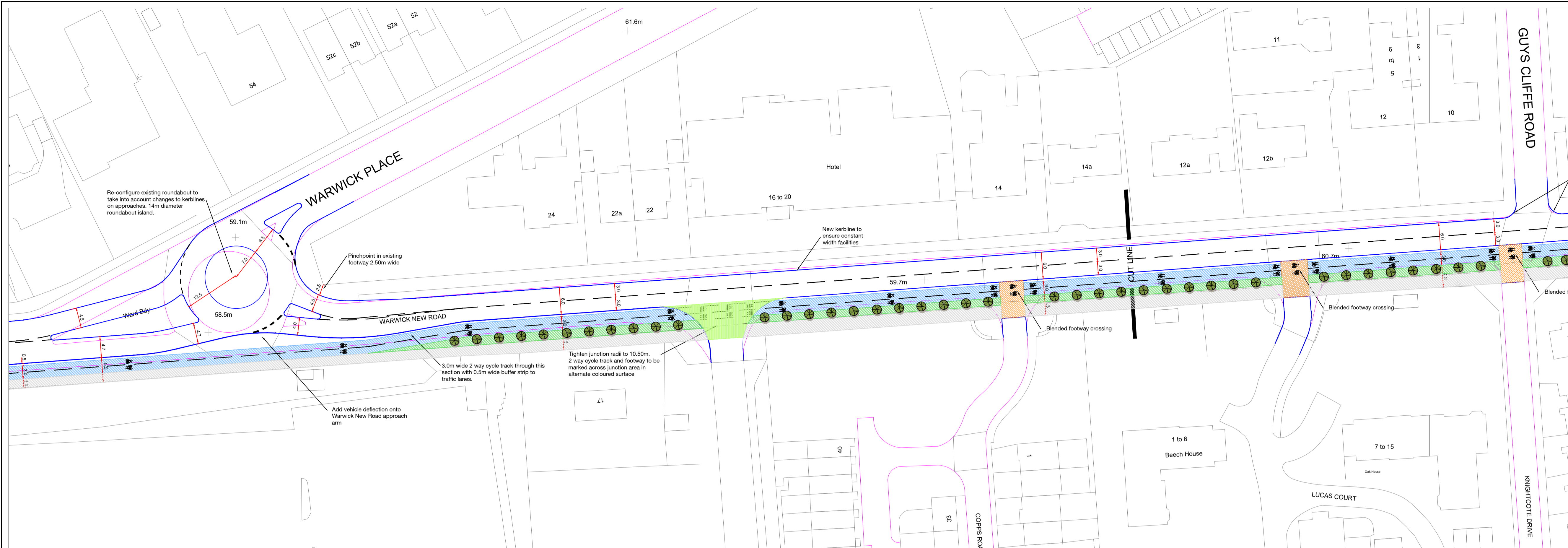
Title:  
**SEGREGATED CYCLE SUPER HIGHWAY**

**WARWICK NEW ROAD  
(PORTEBELLO BRIDGE - WARWICK PLACE)**

Drawn: Checked: Date: Scale at A1:  
MP SEPT 19 1:500

Status:  
**PRELIMINARY DESIGNS**

Drawing No: Revision:  
12445 / P / WM / 08 **A**



**Key:**

[Yellow]	Walking/Cycling Space
[Grey]	Footway
[Dark Grey]	Carriageway/Path Resurfacing
[Light Green]	Raised Table
[Green]	Green Surfacing
[Red]	Red Surfacing
[Blue]	Planting
[Light Blue]	SuDS
[Orange]	Uncontrolled Crossing Tactile Paving
[Light Blue]	Crossing Tactile Paving
[Light Blue]	Parking Bay Modification
[Orange]	Sinusoidal Road Hump
[Pink]	Quietway Route Alignment
[Blue]	Proposed Kerb
[Blue]	Proposed Dropped Kerb
[Pink]	Existing Kerb
[Yellow]	Yellow Line Marking
[Green]	Existing / Proposed Tree
[Black]	Sign & Post
[Black]	Lamp Column

A	Segregated cycle track aligned to use Church Hill / Regent St.	MP	26/09/19
Rev	Description	Drawn	Date

**sustrans**

JOIN THE MOVEMENT

The Walker Building, 58 Oxford Street, Birmingham, B5 5NR  
0121 633 5510 www.sustrans.org.uk

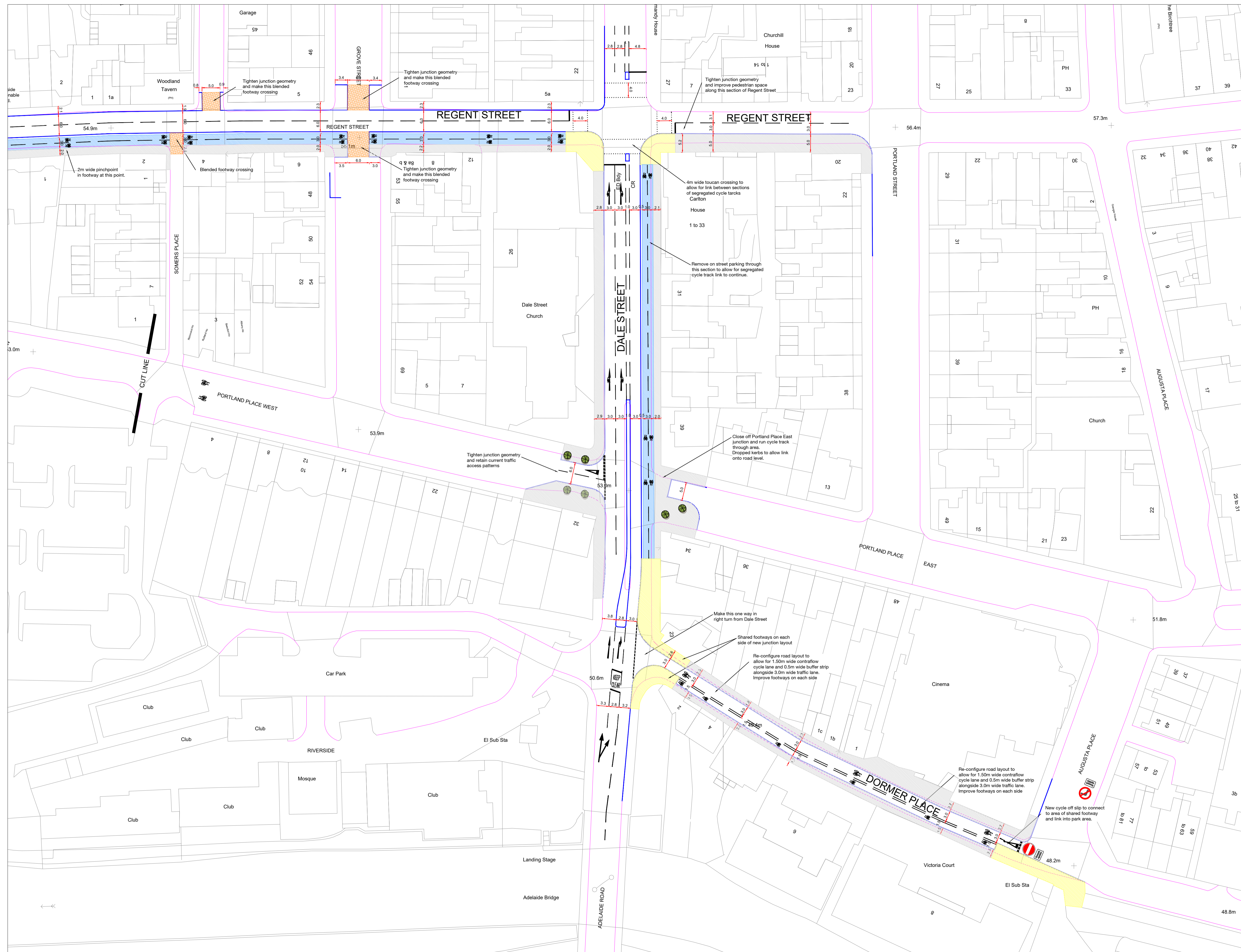
Project:  
**WARWICK - LEAMINGTON CYCLE CORRIDOR**

Title:  
**SEGREGATED CYCLE SUPER HIGHWAY**  
**WARWICK PLACE - CHURCH HILL / MILVERTON HILL**

Drawn: Checked: Date: Scale at A1:  
MP SEPT 19 1:500

Status:  
**PRELIMINARY DESIGNS**

Drawing No: 12445 / P / WM / 10 Revision: **A**



**Key:**

- Walking/Cycling Space
- Footway
- Carriageway/Path Resurfacing
- Raised Table
- Green Surfacing
- Red Surfacing
- Planting
- SuDS
- Uncontrolled Crossing Tactile Paving
- Crossing Tactile Paving
- Parking Bay Modification
- Sinusoidal Road Hump
- Quietway Route Alignment
- Proposed Kerb
- Proposed Dropped Kerb
- Existing Kerb
- Yellow Line Marking
- Existing / Proposed Tree
- Sign & Post
- Lamp Column

A	Dale Street cycle track and link into Dormer Place.	MP	26/09/19
Rev	Description	Drawn	Date

**sustrans**

JOIN THE MOVEMENT

The Walker Building, 58 Oxford Street, Birmingham, B5 5NR  
0121 633 5510 www.sustrans.org.uk

Project:  
WARWICK - LEAMINGTON CYCLE CORRIDOR

Title:  
SEGREGATED CYCLE SUPER HIGHWAY  
REGENT STREET - DORMER PLACE

Drawn: Checked: Date: Scale at A1:  
MP SEPT 19 1:500

Status:  
PRELIMINARY DESIGNS

Drawing No: 12445 / P / WM / 11  
Revision: A